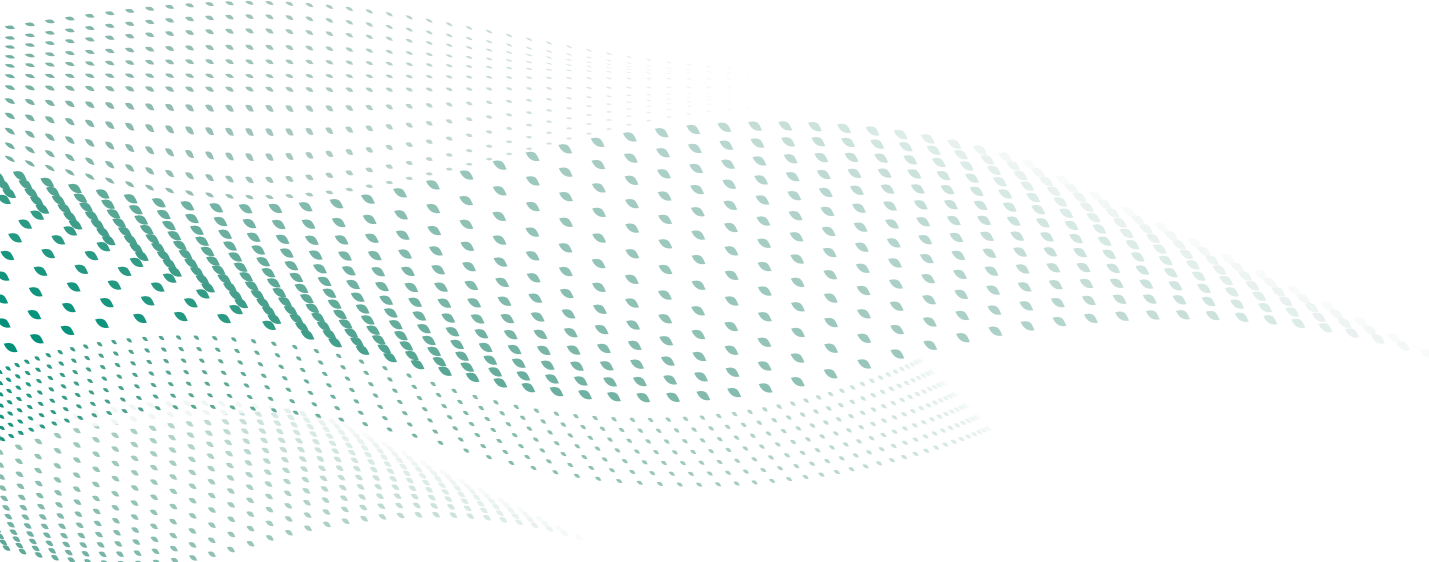


Seafrigo's Experts Solutions

Freight management
Contract logistics
Value added services
General Cargo



France > USA > Canada > Mexico > Brazil > Spain > United Kingdom > Belgium > Netherlands > Egypt
United Arab Emirates > Gabon > Ivory Coast > Australia > China > Hong Kong > Singapore > Malaysia > Sweden



THE GROUP

For 40 years, the Seafrigo Group has developed a worldwide network in food logistics within the refrigerated space leading to business partnerships with global clientele and brands.

Today, we operate 19 offices on 5 continents which allow us to offer a strong international network with multiple platforms to fit our customer needs.

Every day, our **1,200** experts located in **19 countries** are driven by our values (**flexibility, performance and proximity**) to meet the import - export expectations of our clients.

Area of excellence

- Food Industry
- Wine & Spirits
- Frozen products
- Fresh products
- General Cargo

Group key figures

➤ **480** millions €
turnover

➤ **125,000 sqm**
dry capabilities

➤ **81,000 sqm**
under controlled temperature facilities

➤ **86,000**
customs declarations each year

➤ **1,200** employees

➤ **19** countries over 5 continents

A unique contact and operating process over the 5 continents.

Through Seafrigo's **Experts Solutions**, we'll be at your side for each stage of your supply chain:

- Freight pick up everywhere in Europe
- Receipt of cargo
- Trucking and container drayage
- Under controlled storage (-20°C > +2°C/+4°C > +15°C)
- Value added services
- Picking process
- Container loading management
- Shipment and delivery to the end user
- Customs declarations

*Get an access to your logistics portal **24/7**, ask your usual contact for a login.

Accreditations

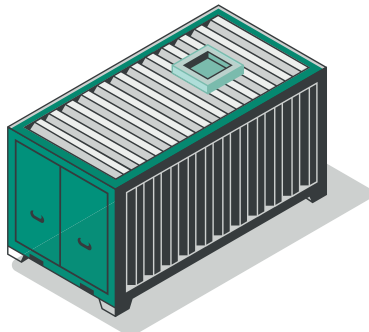
- ☐ VETERINARY
- ☐ PHYTOSANITARY
- ☐ AEO
- ☐ IATA
- ☐ IFS / BRC
- ☐ FDA
- ☐ USDA
- ☐ EXCISE
- ☐ CFIA
- ☐ ASC
- ☐ ORGANIC
- ☐ ISO 9001
- ☐ MSC
- ☐ WCA

FREIGHT MANAGEMENT

Sea freight

Our import/export services
All over the world,
under controlled temperature

LCL - LCL
LCL - FCL
FCL - FCL



Loading from single
pallet to full container.

Ambient,
fresh and frozen
shipments.

**From main
international ports**
to dozens worldwide
destinations.

**Pick up and
delivery** all over
Europe with
refrigerated
trucks.



15,000 T / week
of goods transported in reefer
containers.

110,000 TEU / year

1,000 reefer containers
managed / week

LCL-LCL Expertise



**A unique frozen
LCL service**

More than 30 lines with daily departures
from Europe to the rest of the world

- 1 Enables any company
to reach **international
markets.**
- 2 **New growth opportunities**
in North America, Latin America,
Asia Pacific, the Gulf countries and
the French Overseas Territories.
- 3 **Regardless the number
of packages,** LCL solutions
provide access to new
exports flows.
- 4 Costs optimization using Seafrigo
Group **global supply chain.**

Contact:
lcl.reefer@seafrigo.com

FREIGHT MANAGEMENT

Air freight

An import/export team

Experts in management of perishable freight at any temperature, general cargo and live animals.

100x120 **plastic's pallets** packed with thermal blanket (PMC) instead of using CO9 bis process.

Daily worldwide expeditions from Paris, the Réunion Island, Pointe-à-Pitre, New York, Amsterdam, Shanghai, Hong Kong, Singapore, Melbourne...

Warehouses under controlled temperature located near France, French Overseas territories, American and Australian airports.

High quality service by using top range air container to reduce weight.

All types of products at any temperatures (ambient, cool, frozen).

Pick up everywhere in France.

Customs declarations.

Local customs clearance services, storage and delivery available on main destinations.

➤ **40,000 T**
of goods under controlled temperature flying each year.

➤ **13,000 sqm**
of cold storage capacities dedicated to airfreight in Roissy, Rungis, New York, Melbourne, Singapour, Hong Kong.

➤ **110** | import/export employees



Road transport and Container drayage

A key player

120 trucks meeting the latest Euro 6 standards and 80 refrigerated trailers.



➤ **2,5 million miles**
driven per year

➤ **106,000**
container drayage per year with priority entry to terminals and easy access to your goods

➤ **25,000**
truck deliveries each year

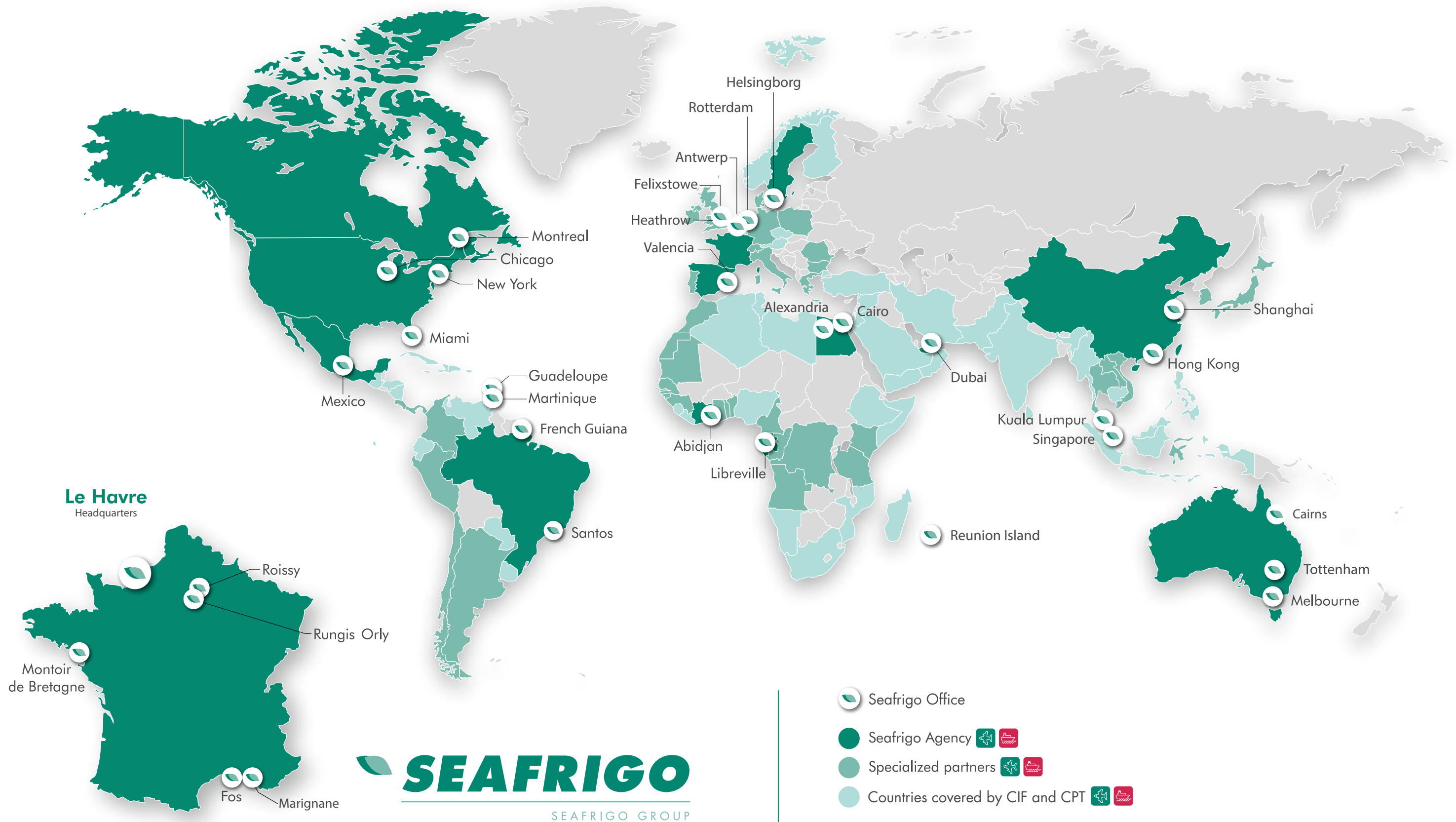
➤ **150** | drivers

➤ **600**
container chassis

Pick up and delivery service from 1 to 33 pallets in France and Europe.

Food industry and pharmaceutical approved **maintenance and washing station.**

Our drivers are eco-driving trained and our trucks geolocated.



LCL — CONTAINER CONSOLIDATION — FCL — AIRFREIGHT
— LOGISTICS PLATFORMS — TRUCKING

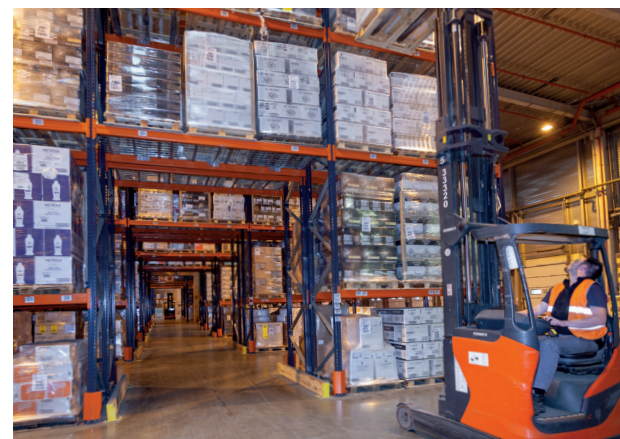
CONTRACT LOGISTICS

Warehousing



Ambient

- 125,000 sqm facilities in the world.
- Spirits, dry fruits, canned food and grocery.



Storage capacities on the 5 continents

Accreditations:

- ☐ VETERINARY
- ☐ PHYTOSANITARY
- ☐ AEO
- ☐ IFS / BRC
- ☐ EXCISE
- ☐ ASC
- ☐ ORGANIC
- ☐ MSC

Under controlled temperature

■ **-20°C > +2°C/+4°C > +15°C**



- 81,000 sqm capabilities worldwide.
- Chocolate, fresh fruits, vegetables, cheeses, seafood and meat, pastries.

VALUE ADDED SERVICES

Our services

It is in Seafrigo Group's DNA to guarantee high quality standards to our customers. In addition to freight forwarding and warehousing, we have developed a strong range of value added services.

- | | |
|---|--|
| <input type="checkbox"/> Consumer sales units labelling | <input type="checkbox"/> Kitting |
| <input type="checkbox"/> Ink jetting / labelling | <input type="checkbox"/> Varying weights and shelf life management |
| <input type="checkbox"/> Double dating | <input type="checkbox"/> Import / Export technical support |
| <input type="checkbox"/> Copacking | <input type="checkbox"/> E-commerce packing |
| <input type="checkbox"/> Repacking | |



GENERAL CARGO'S HIGHLIGHT

Our expertise

Our teams are familiar to set up complex logistics chains and deliver high quality on oversized project cargo.

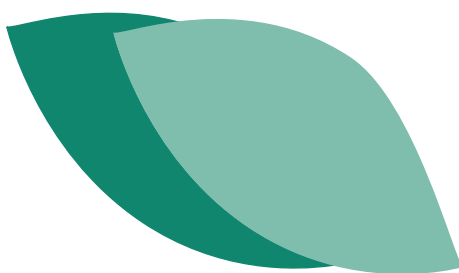
Some of our major achievements:

- > Door to door fire trucks' transportation.
- > Oversized boats' shipment.
- > Dock fenders import's operation from China to France (Calais).



General cargo's branch at Seafrigo Group consists in a technical team dedicated to the global management of your taylor made projects.

Contact :
generalcargo@seafrigo.com



www.seafrigo.com

Seafrigo 58 rue du Général Chanzy

76600 Le Havre - FRANCE

Tel: +33 (0)2 35 24 77 67

Fax: +33 (0)2 35 24 69 66

